



# ROOT VEGETABLES

## ROOT VEGETABLE FITTINGS

With our Root vegetable fittings line you can integrate your Agripo® lifters together with cabinets for herbs and other products in the same category. This makes it easier for the customer to find the assortment and creates a cohesive, selling exposure for your root vegetables.

Our standard materials can be found on page 6.

# ROOT VEGETABLE CABINET



## Root vegetable cabinet Agripo LARGE with doors

Cabinet for integration of Agripolift – doors cover the potato carton in a sleek way. The package includes front acrylic, snap frame 50x70 and there are selectable potato or onion stickers.

-VG900147-998

WIDTH: 1038  
DEPTH: 840  
HEIGHT: 2400

Adapted to Agripo ART. NO.-5700102



-VG900147-998

## Root vegetable cabinet Agripo SMALL with door

Cabinet for integration of Agripolift – door covers the potato carton in a sleek way. The package includes front acrylic, snap frame 50x70 and there are selectable potato or onion stickers.

-VG900148-998

WIDTH: 663  
DEPTH: 840  
HEIGHT: 2400

Adapted to Agripo ART. NO.-5700119



-VG900148-998

## Root vegetable cabinet Agripo LARGE with top shelf

Cabinet for integration of Agripo lifter with shelf. The package includes front acrylic and potato or onion sticker are selectable options.

-VG900165-998

WIDTH: 1038  
DEPTH: 840  
HEIGHT: 2400

Adapted to Agripo ART. NO.-5700102 and -5700120



-VG900165-998

## Root vegetable cabinet Agripo SMALL with top shelf

Cabinet for integration of Agripo lifter with shelf. The package includes front acrylic and potato or onion sticker are selectable options.

-VG900166-998

WIDTH: 663  
DEPTH: 840  
HEIGHT: 2400

Adapted to Agripo ART. NO.-5700119 and -5700125



-VG900166-998



## Root vegetable 1 section

Cabinet with slatwall and podium. There is a large variety of selectable accessories.

ART. NO.	DESCRIPTION	WIDTH	DEPTH	HEIGHT
-VG900149-998	Root vegetable cabinet	963	600	2400
-VG900171-998	Root vegetable cabinet	663	600	2400

See page 122 for accessories.



-VG900149-998

## Root vegetable cabinet 2 sections

Double cabinet with slatwall and podium. There is a large variety of selectable accessories.

**-VG900157-998**

**WIDTH:** 1907  
**DEPTH:** 600  
**HEIGHT:** 2400

See page 122 for accessories.



-VG900157-998

## Herbs cabinet 1 section

Cabinet with a spice stepper shelf with 4 shelves and 1 storage box. Slatwall for shelf or hanger where a slatwall shelf is included. The cabinet is also equipped with a LED-lighting complete with driver kit.

-VG900150-998

WIDTH: 898  
DEPTH: 840  
HEIGHT: 2400



-VG900150-998

## Herbs cabinet 2 sections

Cabinet with 2 spice stepper shelves with 4 shelves and 1 storage box. Slatwall for shelf or hanger where two slatwall shelves are included. The cabinet is also equipped with a LED-lighting complete with driver kit.

-VG900156-998

WIDTH: 1748  
DEPTH: 840  
HEIGHT: 2400



-VG900156-998

## Root vegetable cabinet for trolley

Cabinet for trolley or pallet. For pallet display, the slatwall can be lowered.

-VG900158-998

WIDTH: 889  
DEPTH: 870  
HEIGHT: 2400



-VG900158-998

## Outer end panel for root vegetables with edging strip

Outer end panel that completes the cabinet arrangement including stainless edging strip. Sold per unit.

-VG900163-998

WIDTH: 19  
DEPTH: 900  
HEIGHT: 2400



-VG900163-998

## Recipe front with slatwall

Slatwall for recipes including 8 x 100 mm hangers.

-VG900160-998

WIDTH: 218  
DEPTH: 200  
HEIGHT: 2400



-VG900160-998





## POTATO/ONION LIFTERS

### Agripo lift unit LARGE

Lifter dimensioned to lift 205 kg. Equipped with a safety switch for doors. Pallet support for roller container

-5600003

WIDTH: 975  
DEPTH: 790  
HEIGHT: 1070



-5600003

## Table LARGE for integration

Table with straight corners – used for integration.

ART. NO.	DESCRIPTION	WIDTH	DEPTH	HEIGHT
-5600031	For potatoes	877	585	919 (excl. bag holder)
-5600032	For onions	877	585	919 (excl. bag holder)



-5600031

## Front for table LARGE

Front for table LARGE – used for integration.

**-VG900167-998**

WIDTH: 874  
 DEPTH: 330  
 HEIGHT: 674



-VG900167-998

## Front for table LARGE with box for potatoes

Front with box for baked and sweet potatoes. Fits table LARGE – used for integration.

**-VG900170-998**

WIDTH: 874  
 DEPTH: 330  
 HEIGHT: 674



-VG900170-998

## Front for tabel LARGE with open storage

Front with open storage for packed potatoes. Fits table LARGE – used for integration.

**-AX101201-998**

WIDTH: 875  
 DEPTH: 505  
 HEIGHT: 672



-AX101201-998

## Agripo lift unit SMALL

Lifter dimensioned to lift 100 kg. Equipped with a safety switch for doors.

-5600008

WIDTH: 550  
DEPTH: 790  
HEIGHT: 1070



-5600008

## Table SMALL integration

Table with straight corners – used for integration.

ART. NO.	DESCRIPTION	WIDTH	DEPTH	HEIGHT
-5600035	For potatoes	493	585	919 (excl. bag holder)
-5600036	For onions	493	585	919 (excl. bag holder)



-5600035

## Front table SMALL

Front for table SMALL – used for integration.

-VG900168-998

WIDTH: 478  
DEPTH: 330  
HEIGHT: 674



-VG900168-998

See Agripo brochure for other accessories

## ACCESSORIES – AGRIPO

### Top shelf for table LARGE

Shelf for potatoes on rolling table LARGE. Basic configuration with three shelves.

-5700120

**WIDTH:** 835  
**DEPTH:** 299  
**HEIGHT:** 1280

For other, alternative, shelves, see the Agripo brochure.



-5700120

### Top shelf for table SMALL

Shelf for potatoes on rolling table SMALL. Basic configuration with three shelves.

-5700125

**WIDTH:** 433  
**DEPTH:** 299  
**HEIGHT:** 1280

For other, alternative, shelves, see the Agripo brochure.



-5700125

### Pallet support for roller container

Used for roller container 200 kg.

ART. NO.	SPECIFICATION
3000358	Right
3000359	Left



3000358 / 3000359

# ACCESSORIES – ROOT VEGETABLE CABINET

## Wooden shelf with bracket

Wooden shelf adapted for slatwall, complete with brackets and price edging strip 39 mm.

ART. NO.	DESCRIPTION	WIDTH	DEPTH	HEIGHT
-VG900120-998	Wooden shelf with bracket	898	530	19
-VG900172-998	Wooden shelf with bracket	598	530	19



-VG900120-998

## Sheet metal shelf with bracket

Sheet metal shelf adapted for slatwall, complete with brackets and price edging strip 39 mm.

ART. NO.	DESCRIPTION	WIDTH	DEPTH	HEIGHT
-VG900122	Sheet metal shelf with bracket	898	530	20
-VG900173	Sheet metal shelf with bracket	598	530	20
-VG900145	Sheet metal shelf with bracket	898	430	20
-VG900174	Sheet metal shelf with bracket	598	430	20



-VG900122

## Onion dispenser shelf

Complete onion dispenser shelf including onion dispensers (5600040), for slatwall. Width 898 mm includes 4 onion dispensers width 598 mm includes 2.

ART. NO.	DESCRIPTION	WIDTH	DEPTH	HEIGHT
-VG900162-036	Onion dispenser shelf, 4 dispensers	898	533	572
-VG900175-036	Onion dispenser shelf, 2 dispensers	598	533	572

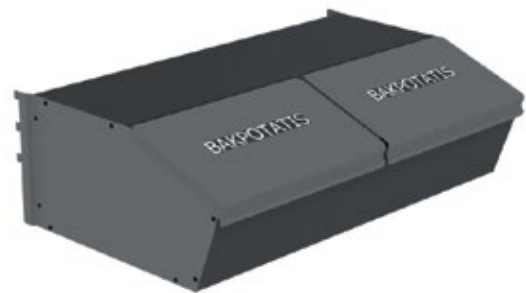


-VG900162-016

## Jacket potato box

Jacket potato box with a sheet metal cover and jacket potato sticker, for slatwall. The box for the 900 section has 2 compartments and the one for 600 has 1 compartment.

ART. NO.	DESCRIPTION	WIDTH	DEPTH	HEIGHT
-VG900115-424	Jacket potato box	898	550	270
-VG900177-424	Jacket potato box	598	550	270



-VG900115-424

## Hanger rail adapted to for slatwall

Hanger rail adapted for slatwall. The package includes a single hanger, a label display strip holder and a label display strip.

ART. NO.	DESCRIPTION	WIDTH	DEPTH	HEIGHT
-VG900169	Hanger rail with accessories	898	490	45
-VG900176	Hanger rail with accessories	598	490	45



-VG900169

## ACCESSORIES – OTHER FITTINGS

### Single hangers for slatwall

Grey single hanger 200 mm adapted for slatwall.

SPÅ 531204-7



SPÅ 531204-7

### Slatwall shelf with bracket

Wooden shelf adapted to slatwall. Complete package including brackets.

-VG900152

WIDTH: 848  
DEPTH: 200  
HEIGHT: 19



-VG900152-998



**BUTIKSKONSULT**

**Visit:** Järsjögatan 9 **Mail:** Box 140, SE-692 23 KUMLA

**Office:** +46 (0)19-57 80 80 **E-mail:** [inredning@butikskonsult.com](mailto:inredning@butikskonsult.com) **Web:** [www.butikskonsult.com](http://www.butikskonsult.com)